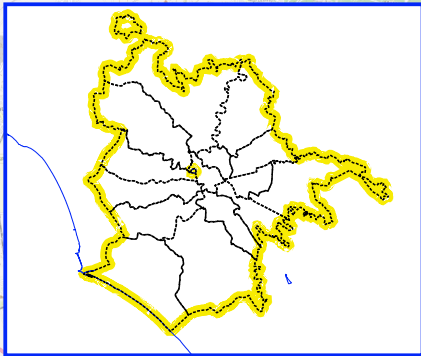
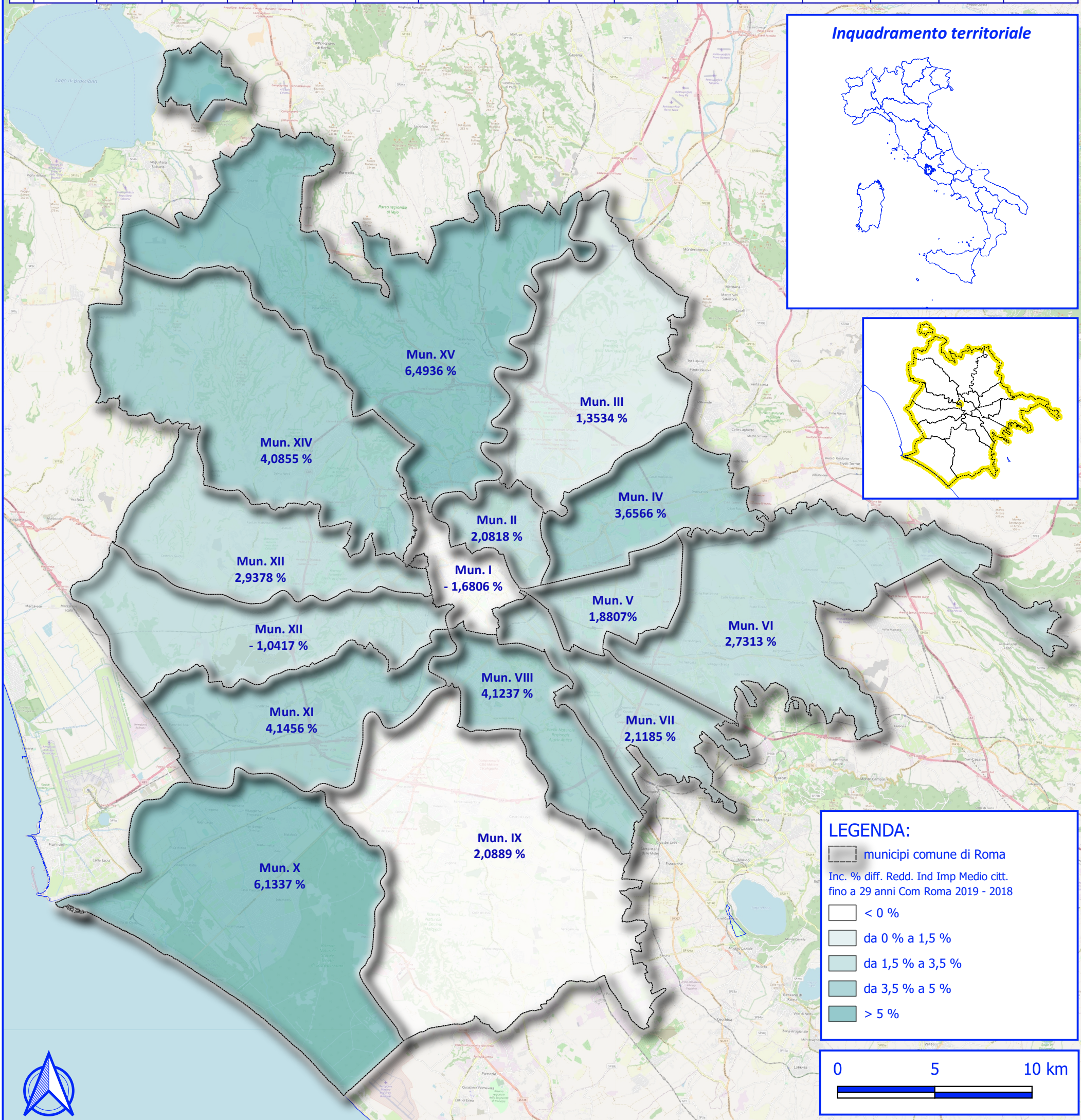


# Analisi e studio socio - economico nel Comune di Roma - elaborato V.A.1

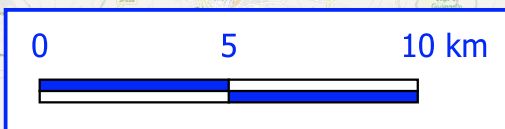
Incidenza percentuale sulla differenza tra il reddito individuale imponibile medio del 2019 ed il reddito individuale imponibile medio del 2018 dei contribuenti fino a 29 anni distribuita su tutto il territorio del Comune di Roma ripartita per Municipio

Mun.	V.A. fe < 29 R 2019	V.A. fe 30-44 R 2019	V.A. fe 45-59 R 2019	V.A. fe 60-74 R 2019	V.A. fe > 75 R 2019	V.A. fe < 29 R 2018	V.A. fe 30-44 R 2018	V.A. fe 45-59 R 2018	V.A. fe 60-74 R 2018	V.A. fe > 75 R 2018	DR fe < 29 R 18-19	DR fe 30-44 R 18-19	DPR fe 30-44 R 18-19	DPR fe 45-59 R 18-19	DR fe 60-74 R 18-19	DR fe > 75 anni R 18-19
I	10362.3116246498	25596.5115150753	46335.6388313825	47936.3079598561	38695.5146815061	10539.4331505953	26933.5693790866	47124.663537881	48383.8695266295	36938.2293119471	-177.1215	-1337.0579	-4.9643	-1.6743	-447.5616	1757
II	9813.21120505584	29229.0840009259	51309.2232562436	50524.9387189767	40156.8538931296	9613.09035559948	29676.6547925163	52075.6005627563	50381.9533012064	39382.5875632128	200.1208	-447.5708	-1.5082	-1.4717	142.9854	774
III	9744.47607561579	21498.7029055994	29619.5300358262	31373.1328218649	26037.5135681774	9614.35510382716	21812.1895903137	30031.971437067	31069.5591125711	25209.7541620254	130.121	-313.4867	-1.4372	-1.3733	303.5737	828
IV	10005.5255048623	18713.0046836533	24926.3544727148	26723.4108772542	20838.4879083666	9652.56911426454	18840.1624243812	25355.3368611815	26188.3188804499	20029.6676731365	352.9564	-127.1577	-0.6749	-1.6919	535.092	809
V	9788.90747003729	16945.2026235342	22466.2285298122	23799.1128622957	18031.2576428571	9608.20934594735	16955.8891609841	22721.2898114053	23372.7067645971	17556.312012355	180.6981	-10.6865	-0.063	-1.1226	426.4061	475
VI	10118.7083197534	16624.6739783905	19940.9368616136	20896.84290459	16076.7196220063	9849.68604647268	16701.2668268944	20075.1358228596	20469.4926223938	15649.4609429603	269.0223	-76.5928	-0.4586	-0.6685	427.3503	427
VII	10075.3170025323	20991.0140329491	29143.803796173	30048.5935457944	23086.1893636653	23086.1893636653	21097.2089307858	29361.9106233552	29363.6399618692	22424.9498803922	209.0196	-106.1949	-0.5034	-0.7428	684.9536	661
VIII	9654.5800717886	23076.101170943	33838.1399540114	33959.8011206298	28095.6178664421	9272.21786912753	23146.2030414098	34291.8203627143	33730.6576411497	27306.6683060572	382.3622	-70.1019	-0.3029	-1.323	229.1435	789
IX	13040.2552769872	24584.2810709828	34577.2850455507	35394.6618794436	29690.5304311597	13076.3494732665	24655.7874992612	35309.9304836863	35059.1287356112	29250.0135969644	-36.0942	-71.5064	-0.29	-2.0749	335.5331	441
X	11101.2866472643	19323.5762961683	26595.7384125091	27160.3908877402	23523.3670048613	10459.7140074146	19498.3428991873	26959.5556816754	26842.0343821464	22994.1981157988	641.5726	-174.7666	-0.8963	-1.3495	318.3565	529
XI	9931.12215150827	19084.3131787081	24841.2541702071	25612.2884446675	21230.4194636165	9535.80603716961	19151.6362241577	24867.2155348724	25343.5830510928	20570.3688308699	395.3161	-67.323	-0.3515	-0.1044	268.7054	660
XII	9444.43721657863	21931.8324338455	32803.1908052548	33432.6866795602	26858.4083746542	9251.19244348909	22260.5971300633	33394.0134196803	33206.3586620157	26376.5684753731	193.2448	-328.7647	-1.4769	-1.7692	226.328	482
XIII	9460.6999476234	19140.3639058811	28389.3353891368	28914.7014331564	23512.3176989806	9190.69173434634	19452.9066727256	28686.9306569892	28697.5310775454	23125.9407796587	270.0082	-312.5428	-1.6067	-1.0374	217.1704	386
XIV	9906.66530159852	20388.1295287016	29979.5373815558	32617.1778679967	25900.4774455646	9517.81407802686	20921.3514744302	30447.442614194	32126.8309580177	25628.2338526326	388.8512	-533.2219	-2.5487	-1.5368	490.3469	272
XV	11291.815896716	21712.874958453	35025.1584429154	35882.1476677537	30750.7481921555	10603.279151408	22111.0472588101	35518.734382717	35632.6726473287	30845.8499049258	688.5367	-398.1723	-1.8008	-1.3896	249.475	-95



**LEGENDA:**

- municipi comune di Roma
- Inc. % diff. Redd. Ind Imp Medio citt. fino a 29 anni Com Roma 2019 - 2018
- < 0 %
- da 0 % a 1,5 %
- da 1,5 % a 3,5 %
- da 3,5 % a 5 %
- > 5 %



Fonte: Elaborazioni Ufficio di Statistica di Roma Capitale su dati Siatel - Agenzia delle Entrate forniti dal Dipartimento Risorse Economiche

Roma, 24 febbraio 2022

Redatto da: Antonino Sciortino